

# T90cn-0,5M Aluminum

ACT9005C.ALU



Ratio  
Rapporto  
**1:1**



RPM  
Velocità  
**10.000 min<sup>-1</sup>**



Max. axial load  
Max. carico assiale  
**120 N**



Torque  
Momento torcente  
**8 Nm**



Weight  
Peso  
**2,7 Kg**

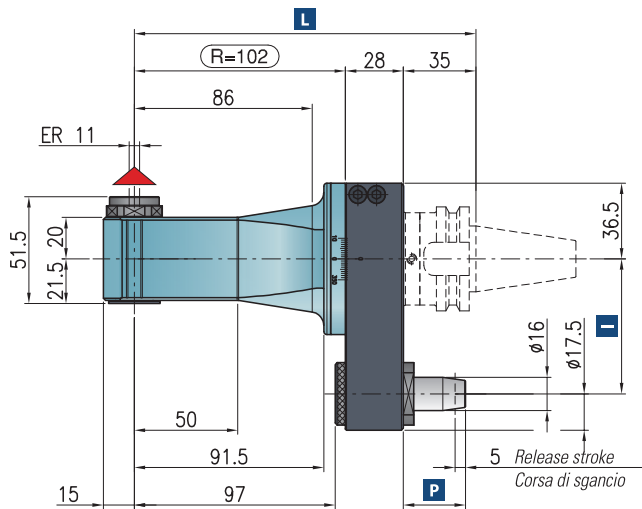


Collet  
Pinza  
**ERAX-11 (ø 0,5/7 mm)**

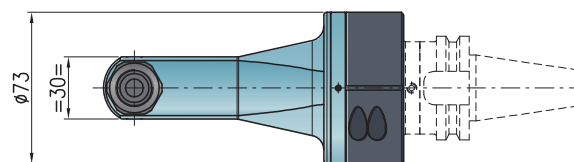
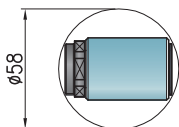


Shank  
Cono  
**ISO 30DIN-69871/BT-30**

\* STANDARD EQUIPMENT INCLUDES:



Minimum diameter without tool  
Diametro minimo senza utensile



Retaining block / Tassello di ritengo / Stop-Block

NOT INCLUDED - NON INCLUSO



	FANUC ROBODRILL	BROTHER S2D	BROTHER TC-32	BROTHER R450X1	BROTHER S500 S700 S1000	DMG MORI MILLTAP 700
I	65	80	80	50	80	65
P	24	24	30	24	25,75	24
L	165	165	165	165	165	165

Dual contact spindles available / Disponibilità coni a doppio contatto

▲ Direction of rotation opposite to machine spindle / senso di rotazione contrario al mandrino

Opzione / Option



AIR/OIL

Air / oil lubrication  
Lubrificazione aria / olio

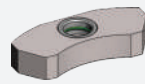
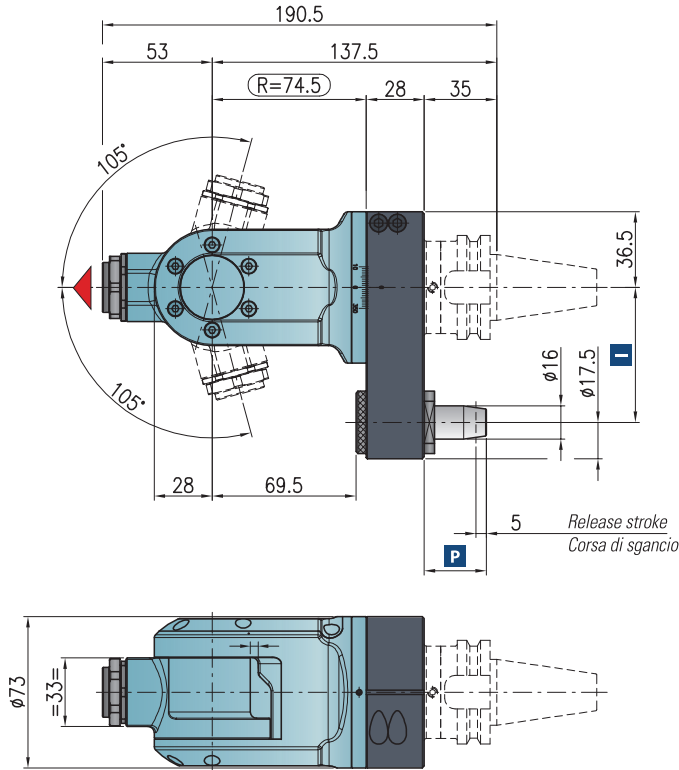


bar max  
12

Coolant through pin  
Refrigerante attraverso il perno

# TCUcn-0,5M Aluminum

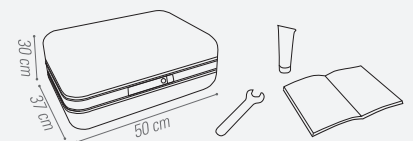
## ACTCU05C.ALU



Retaining block / Tassello di ritegno / Stop-Block  
**NOT INCLUDED - NON INCLUSO**

- Ratio  
Rapporto  
**1:1.5 (Speeder)**
- RPM OUTPUT  
Velocità  
**6.000 min<sup>-1</sup>**
- Max. axial load  
Max carico assiale  
**215N**
- Torque  
Momento torcente  
**8 Nm**
- Weight  
Peso  
**2,8 Kg**
- Collet  
Pinza  
**ERAX-11 (ø 0,5/7 mm)**
- Shank  
Cono  
**ISO 30DIN-69871/BT-30**

\* STANDARD EQUIPMENT INCLUDES:



	FANUC ROBODRILL	BROTHER S2D	BROTHER TC-32	BROTHER R450X1	BROTHER S500 S700 S1000	DMG MORI MILLTAP 700
I	65	80	80	50	80	65
P	24	24	30	24	25,75	24

Dual contact spindles available / Disponibilità coni a doppio contatto

Direction of rotation opposite to machine spindle / senso di rotazione contrario al mandrino

Opzione / Option



bar max  
**12**

Coolant through pin  
Refrigerante attraverso il perno